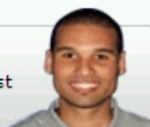


5148057-5 Product Details

Have a Question?

Chat with a Product Information Specialist



5148057-5

TE Internal Number: 5148057-5

Active

[View 3D PDF](#)

Eurocard Type C

[Always EU RoHS/ELV Compliant \(Statement of Compliance\)](#)

Product Highlights:

- Preloaded
- Contact Gender = Receptacle
- Housing Gender = Plug
- Type = Type C
- 2.54 mm Centerline

[View all Features](#)

Quick Links

- ▶ [Check Pricing & Availability](#)
- ▶ [Search for Tooling](#)
- ▶ [View Mating Products \(19\)](#)
- ▶ [Product Feature Selector](#)
- ▶ [Contact Us About This Product](#)

[Add to My Part List](#) [Request Sample](#) [Find Similar Products](#) [Buy Product](#)

Documentation & Additional Information

Product Drawings:

- [ASSEMBLY, RECEPTACLE, EUROCARD, TYPE C, 96 POSITION...](#) (PDF, English)

Catalog Pages/Data Sheets:

- None Available

Product Specifications:

- None Available

Application Specifications:

- [Eurocard Connectors Types B,C,M,Q,R, & Enchanced Typ...](#) (PDF, English)

Instruction Sheets:

- None Available

CAD Files: ([CAD Format & Compression Information](#))

- [2D Drawing](#) (DXF, Version 0)
- [3D Model](#) (IGES, Version 0)
- [3D Model](#) (STEP, Version 0)

[List all Documents](#)

Additional Information:

- [Product Line Information](#)

Related Products:

- [Tooling](#)
- [Mating Products \(19\)](#)

Product Features (Please use the Product Drawing for all design activity)

Product Type Features:

- [PCB Mount Retention](#) = With
- [PCB Mount Angle](#) = Vertical
- [PCB Thickness \(Minimum\) \(mm \[in\]\)](#) = 2.36 [0.093]
- [Post Type](#) = Compliant Post
- [Size](#) = Standard
- [Make First / Break Last](#) = No
- [Bus Type](#) = FUTUREBUS, MULTIBUS (II), NUBUS, VMEbus, VXIBus
- [DIN Level](#) = II
- [Mounting Ears](#) = With
- Toolless (Flat Rock) = Yes

Termination Related Features:

- [Termination Post Length \(mm \[in\]\)](#) = 13.00 [0.512]
- Solder Tail Contact Plating = Tin

Body Related Features:

- [Type](#) = Type C
- [Centerline \(mm \[in\]\)](#) = 2.54 [0.100]
- Number of Rows = 3
- [Number of Positions](#) = 96
- [Rows Loaded](#) = A, B, C
- [PCB Mount Retention Type](#) = ACTION PIN (Compliant) Posts
- [Contact Cross Section \(mm \[in\]\)](#) = 0.64 [.025] Sq.

Contact Related Features:

- Preloaded = Yes
- Contact Gender = Receptacle
- Contact Base Material = Copper Alloy
- Contact Plating, Mating Area, Material = DIN 41612 Class 2

Housing Related Features:

- Housing Gender = Plug
- Housing Material = Polymer
- UL Flammability Rating = UL 94V-0

Industry Standards:

- [RoHS/ELV Compliance](#) = RoHS compliant, ELV compliant
- [Lead Free Solder Processes](#) = Not relevant for lead free process
- [Flux-Tight Coating](#) = Without
- RoHS/ELV Compliance History = Always was RoHS compliant

Conditions for Usage:

- [Applies To](#) = Printed Circuit Board
- [High Temperature Housing](#) = No

Other:

- Brand = AMP

BOOKMARK

Corporate Information

- [Who We Are](#)
- [Investors](#)
- [News Room](#)
- [Supplier Portal](#)
- [Careers](#)

Quick Links

- [Check Distributor Inventory](#)
- [Cross Reference](#)
- [Find Documents & Drawings](#)
- [Product Compliance Support Center](#)
- [Site Map](#)

Customer Support

- [Email or Chat with Us](#)
- [Find a Phone Number](#)
- [Search Knowledge Base](#)
- [Manage Your Account](#)

Sign up for our eNewsletter

Enter your email address

Follow us on: