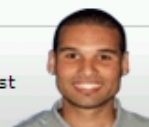


2-5747705-1 Product Details

Have a Question?

Chat with a Product Information Specialist



2-5747705-1

TE Internal Number: 2-5747705-1

Active

[View 3D PDF](#)

Standard Board Mount Connectors

[Always EU RoHS/ELV Compliant \(Statement of Compliance\)](#)

Product Highlights:

- 37 Positions
- Housing Gender = Plug
- PCB Mount Angle = Vertical
- Product Series = HDP-20
- With Mating Connector Lock

[View all Features](#)

Quick Links

- ▶ [Check Pricing & Availability](#)
- ▶ [Search for Tooling](#)
- ▶ [View Mating Products \(4\)](#)
- ▶ [Product Feature Selector](#)
- ▶ [Contact Us About This Product](#)

[Add to My Part List](#) [Request Sample](#) [Find Similar Products](#) [Buy Product](#)

Documentation & Additional Information

Product Drawings:

- [PLUG ASSEMBLY, SIZE 4, 37 POS., VERTICAL, .026 DIA. ...](#) (PDF, English)

Catalog Pages/Data Sheets:

- None Available

Product Specifications:

- [AMPLIMITE* HD-20 PCB Mounted Connector](#) (PDF, English)

Application Specifications:

- [AMPLIMITE HD-20 Straight Solder Contact Tine, Front ...](#) (PDF, English)

Instruction Sheets:

- None Available

CAD Files: (CAD Format & Compression Information)

- [2D Drawing](#) (DXF, Version B)
- [3D Model](#) (IGES, Version B)
- [3D Model](#) (STEP, Version B)

[List all Documents](#)

Additional Information:

- [Product Line Information](#)

Related Products:

- [Tooling](#)
- [Mating Products \(4\)](#)

Product Features (Please use the Product Drawing for all design activity)

Product Type Features:

- [PCB Mount Angle](#) = Vertical
- [Product Series](#) = HDP-20
- [Mating Connector Lock](#) = With
- [Mating Connector Lock Type](#) = Female Screwlocks, 4-40 UNC
- [PCB Mount Retention](#) = With
- [Shell Type](#) = Front Metal Shell
- [Shell Size](#) = 4
- [Grounding Indents](#) = With
- [Grounding Straps](#) = Without
- [PCB Mount Style](#) = Through Hole
- [Color Code](#) = None
- Sealed = No
- Profile = Standard
- Post Size (mm [in]) = 0.66 [.026]
- Mounting Hole Diameter (mm [in]) = 3.05 [.120]
- Shell Material = Steel

Mechanical Attachment:

- [Panel Attachment](#) = Without
- Boardlock Material = Brass
- Boardlock Plating = Tin

Termination Related Features:

- [Grounding Clips](#) = Without
- [Termination Post Length \(mm \[in\]\)](#) = 4.32 [0.170]
- [Solder Tail Contact Plating](#) = Tin over Nickel

Body Related Features:

- [Number of Positions](#) = 37
- [PCB Mount Retention Type](#) = Mounting Holes
- Insert Material = Brass
- Shell Plating = Tin

Contact Related Features:

- [Contact Plating, Mating Area, Material](#) = Gold (30)
- Contact Shape = Round
- Contact Base Material = Brass

Housing Related Features:

- Housing Gender = Plug
- UL Flammability Rating = UL 94V-0
- Housing Material = Thermoplastic - GF

Industry Standards:

- [RoHS/ELV Compliance](#) = RoHS compliant, ELV compliant
- [Lead Free Solder Processes](#) = Wave solder capable to 240°C, Wave solder capable to 260°C, Wave solder capable to 265°C
- RoHS/ELV Compliance History = Always was RoHS compliant

Conditions for Usage:

- [PCB Thickness, Recommended \(in \[mm\]\)](#) = 0.062 [1.57], 0.093 [2.36]

Operation/Application:

- Application = Standard

Other:

- Brand = AMP

BOOKMARK

Corporate Information

[Who We Are](#)
[Investors](#)
[News Room](#)
[Supplier Portal](#)
[Careers](#)

Quick Links

[Check Distributor Inventory](#)
[Cross Reference](#)
[Find Documents & Drawings](#)
[Product Compliance Support Center](#)
[Site Map](#)

Customer Support

[Email or Chat with Us](#)
[Find a Phone Number](#)
[Search Knowledge Base](#)
[Manage Your Account](#)

Sign up for our eNewsletter

Enter your email address

Follow us on: