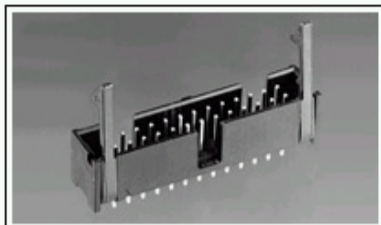
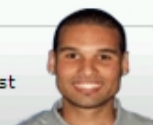


2-1761607-3 Product Details

Have a Question?

Chat with a Product Information Specialist



2-1761607-3

TE Internal Number: 2-1761607-3

Active

[View 3D PDF](#)

Pin and Pinless Headers (AMP-LATCH)

[Always EU RoHS/ELV Compliant](#) ([Statement of Compliance](#))

Product Highlights:

- Preloaded
- Housing Gender = Header - Pin
- Header Type = Pin Header
- AMP-LATCH Product Line
- Low Profile

[View all Features](#)

Quick Links

- ▶ [Check Pricing & Availability](#)
- ▶ [Search for Tooling](#)
- ▶ [View Mating Products \(14\)](#)
- ▶ [Product Feature Selector](#)
- ▶ [Contact Us About This Product](#)

[Add to My Part List](#) [Request Sample](#) [Find Similar Products](#) [Buy Product](#)

Documentation & Additional Information

Product Drawings:

- [HEADER ASSEMBLY, RIGHT ANGLE, LONG EJECT LATCH, LOW ...](#) (PDF, English)

Catalog Pages/Data Sheets:

- None Available

Product Specifications:

- [AMP-LATCH* and IDC Header Connectors, .100 x .100 In...](#) (PDF, English)

Application Specifications:

- None Available

Instruction Sheets:

- None Available

CAD Files: ([CAD Format & Compression Information](#))

- [2D Drawing](#) (DXF, Version G)
- [3D Model](#) (IGES, Version G)
- [3D Model](#) (STEP, Version G)

[List all Documents](#)

Additional Information:

- [Product Line Information](#)

Related Products:

- [Tooling](#)
- [Mating Products \(14\)](#)

Product Features (Please use the Product Drawing for all design activity)

Product Type Features:

- Product Line = AMP-LATCH
- [Profile](#) = Low
- [PCB Mount Angle](#) = Right Angle
- [PCB Mount Retention](#) = Without
- [Mating Polarization Type](#) = Center, Military
- [Mating Connector Lock](#) = Without
- [Housing Style](#) = 4-Sided
- [Ejection Latches](#) = With
- Post Size (mm [in]) = 0.64 [.025]
- Shrouded = Yes
- Mating Polarization = With
- [Shrouded] End Dimension (mm [in]) = 3.81 [0.150]

Termination Related Features:

- [Termination Post Length \(mm \[in\]\)](#) = 2.60 [0.102]
- Solder Tail Contact Plating = Tin over Nickel

Body Related Features:

- Header Type = Pin Header
- [Number of Positions](#) = 10
- [Centerline, Matrix \(mm \[in\]\)](#) = 2.54 x 2.54 [.100 x .100]
- Daisy Chain = With

Contact Related Features:

- Preloaded = Yes
- [Contact Plating, Mating Area, Material](#) = Gold Flash over Palladium Nickel
- Contact Shape = Square
- Contact Base Material = Phosphor Bronze

Housing Related Features:

- Housing Gender = Header - Pin
- Housing Material = Thermoplastic - GF
- UL Flammability Rating = UL 94V-0
- Housing Color = Blue

Industry Standards:

- [RoHS/ELV Compliance](#) = RoHS compliant, ELV compliant
- [Lead Free Solder Processes](#) = Wave solder capable to 240°C, Wave solder capable to 260°C, Wave solder capable to 265°C
- RoHS/ELV Compliance History = Always was RoHS compliant

Conditions for Usage:

- [Temperature Rating](#) = Standard

Other:

- Brand = AMP

BOOKMARK

Corporate Information

[Who We Are](#)
[Investors](#)
[News Room](#)
[Supplier Portal](#)
[Careers](#)

Quick Links

[Check Distributor Inventory](#)
[Cross Reference](#)
[Find Documents & Drawings](#)
[Product Compliance Support Center](#)
[Site Map](#)

Customer Support

[Email or Chat with Us](#)
[Find a Phone Number](#)
[Search Knowledge Base](#)
[Manage Your Account](#)

Sign up for our eNewsletter

Enter your email address

Follow us on: