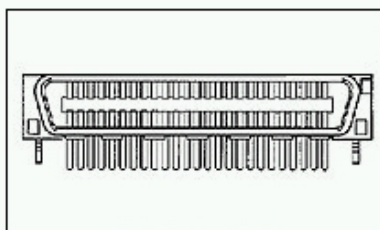
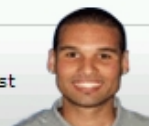


## 1734099-6 Product Details

### Have a Question?

Chat with a Product Information Specialist



1734099-6

TE Internal Number: 1734099-6

Active

[View 3D PDF](#)

### 1.27 [.050] Series I, HD, FH and J Connectors

[Always EU RoHS/ELV Compliant \(Statement of Compliance\)](#)

#### Product Highlights:

- Connector
- Applies To Printed Circuit Board
- Housing Gender = Plug
- 60 Positions
- 1.27 mm Centerline

[View all Features](#)

#### Quick Links

- ▶ [Check Pricing & Availability](#)
- ▶ [Search for Tooling](#)
- ▶ [Product Feature Selector](#)
- ▶ [Contact Us About This Product](#)

[Add to My Part List](#) [Request Sample](#) [Find Similar Products](#) [Buy Product](#)

#### Documentation & Additional Information

##### Product Drawings:

- [PLUG ASSEMBLY, RIGHT ANGLE, 13.2mm, BOARD-TO-BOARD, ...](#) (PDF, English)

##### Catalog Pages/Data Sheets:

- None Available

##### Product Specifications:

- [Connector, CHAMP, 050, Board-To-Board, Vertical and ...](#) (PDF, English)

##### Application Specifications:

- None Available

##### Instruction Sheets:

- None Available

##### CAD Files: ([CAD Format & Compression Information](#))

- [2D Drawing](#) (DXF, Version D)
- [3D Model](#) (IGES, Version D)
- [3D Model](#) (STEP, Version D)

[List all Documents](#)

##### Additional Information:

- [Product Line Information](#)

##### Related Products:

- [Tooling](#)

#### Product Features (Please use the Product Drawing for all design activity)

##### Product Type Features:

- [Product Type](#) = Connector
- [Profile](#) = Standard
- [PCB Mount Style](#) = Through Hole
- [PCB Mount Retention](#) = With
- [PCB Mount Angle](#) = Right Angle
- [Type of Connector](#) = Series I
- [PCB Mount Polarization](#) = Without
- [Color](#) = Black
- [Used For](#) = Board To Board Applications

##### Mechanical Attachment:

- [Boardlock Material](#) = Brass
- [Boardlock Plating](#) = Tin-Copper over Nickel

##### Termination Related Features:

- [Termination Post Length \(mm \[in\]\)](#) = 3.10 [0.122]
- [Solder Tail Contact Plating](#) = Tin

##### Body Related Features:

- [Number of Positions](#) = 60
- [Centerline \(mm \[in\]\)](#) = 1.27 [0.050]
- [PCB Mount Retention Type](#) = Boardlock(s)

##### Contact Related Features:

- [Contact Plating, Mating Area, Material](#) = Gold (30)
- [Contact Base Material](#) = Phosphor Bronze

##### Housing Related Features:

- [Housing Gender](#) = Plug
- [Housing Temperature Rating](#) = Standard
- [Housing Material](#) = Liquid Crystal Polymer (LCP)
- [UL Flammability Rating](#) = UL 94V-0

##### Configuration Related Features:

- [Stack Height \(mm \[in\]\)](#) = 13.20 [0.520]

##### Industry Standards:

- [RoHS/ELV Compliance](#) = RoHS compliant, ELV compliant
- [Lead Free Solder Processes](#) = Wave solder capable to 240°C, Wave solder capable to 260°C, Wave solder capable to 265°C
- [RoHS/ELV Compliance History](#) = Always was RoHS compliant

##### Conditions for Usage:

- [Applies To](#) = Printed Circuit Board

##### Operation/Application:

- [Application](#) = VESA

##### Other:

- [Brand](#) = AMP

[BOOKMARK](#)

#### Corporate Information

[Who We Are](#)  
[Investors](#)  
[News Room](#)  
[Supplier Portal](#)  
[Careers](#)

#### Quick Links

[Check Distributor Inventory](#)  
[Cross Reference](#)  
[Find Documents & Drawings](#)  
[Product Compliance Support Center](#)  
[Site Map](#)

#### Customer Support

[Email or Chat with Us](#)  
[Find a Phone Number](#)  
[Search Knowledge Base](#)  
[Manage Your Account](#)

#### Sign up for our eNewsletter

Enter your email address

Follow us on:

