

Fuse Blocks, 5 x 20 and 5 x 25 mm

Altech fuse terminals are also available with light indication - CSFL4U(L). A specially designed built-in circuit gives light indication in the event of fuse blow out. Thus, fault in a circuit can be easily located.

However, an application of such terminals must take into consideration residual current flow.

DDFL4U - Double Level Fuse Terminal with fuse link on the top level has a separate feed through terminal at the lower level. This eliminates use of an additional feed through terminal.

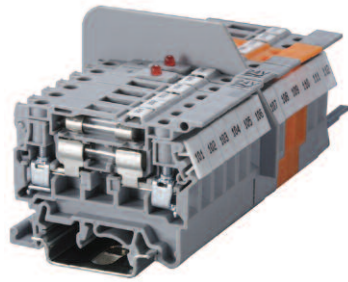
In DDFL4U(E), specially designed built in circuit gives light indication in the event of a fuse blow out at the top level. The terminal provides separate feed through connection possibility at the lower level.

DDFL4U(LR): This is a modified version of DDFL4U(E) terminal where in two equipotential connection points are available on both ends of the terminal.

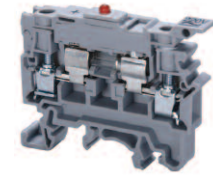
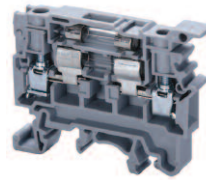
Important:

The disconnecting device is not suitable for interrupting load. The supply must be switched off before operating the slide link/lever.

† Fuses are sold separately Altech, see pages 23-24.



CSFL4U	CSFL4U(L)*
--------	------------



† Fuse not included.

† Fuse not included.

Terminal Width	8 mm
Height x Length	43 x 58 mm
Stripping Length	9.5 mm
Insulation Material	Polyamide 6.6
Type of Connection	2 screw clamps
LED Voltage	24V AC/DC, 48V AC/DC, 110V AC/DC, 220V AC, 300V AC

Terminal Width	8 mm
Height x Length	43 x 58 mm
Stripping Length	9.5 mm
Insulation Material	Polyamide 6.6
Type of Connection	2 screw clamps
LED Voltage	24V AC/DC, 48V AC/DC, 110V AC/DC, 220V AC, 300V AC

Type of Fuse Used	Ø5x20, Ø5x25 mm				
Approvals	<table border="1"> <tr> <td></td> <td></td> </tr> <tr> <td>C US</td> <td>C E220514</td> </tr> </table>			C US	C E220514
C US	C E220514				
Wire Range	22-10 AWG				
Voltage Rating	600 V				
Current Rating	6.3 A				
Torque	7 lb-in				
Other Approvals					

Type of Fuse Used	Ø5x20, Ø5x25 mm				
Approvals	<table border="1"> <tr> <td></td> <td></td> </tr> <tr> <td>C US</td> <td>C E220514</td> </tr> </table>			C US	C E220514
C US	C E220514				
Wire Range	22-10 AWG				
Voltage Rating	600 V				
Current Rating	10 A				
Torque	7 lb-in				
Other Approvals					

Terminal Block

End Plate	
Isolation Partition	
DIN Rail for ordering information refer to page 70	

Cat. No.	Std. Pk.
CSFL4U	100
EPCSFL4U	50
PPCSFL4U	50

Cat. No.	Std.
CSFL4U(L)*	50
EPCSFL4U	50
PPCSFL4U	50

End Stop for ordering information refer to page 72									
Internal Jumper	<table border="1"> <tr> <td>2 pole</td> <td></td> </tr> <tr> <td>3 pole</td> <td></td> </tr> <tr> <td>4 pole</td> <td></td> </tr> <tr> <td>10 pole</td> <td></td> </tr> </table>	2 pole		3 pole		4 pole		10 pole	
2 pole									
3 pole									
4 pole									
10 pole									

CA702	50
CA802	50
CA711/2	100
CA711/3	100
CA711/4	50
CA711/10	20

CA702	50
CA802	50
CA711/2	100
CA711/3	100
CA711/4	50
CA711/10	20

Insulated Internal Jumper	<table border="1"> <tr> <td>2 pole</td> <td></td> </tr> <tr> <td>3 pole</td> <td></td> </tr> <tr> <td>4 pole</td> <td></td> </tr> <tr> <td>10 pole</td> <td></td> </tr> </table>	2 pole		3 pole		4 pole		10 pole	
2 pole									
3 pole									
4 pole									
10 pole									
Current Bar	<table border="1"> <tr> <td>2 pole</td> <td></td> </tr> <tr> <td>3 pole</td> <td></td> </tr> <tr> <td>4 pole</td> <td></td> </tr> <tr> <td>10 pole</td> <td></td> </tr> </table>	2 pole		3 pole		4 pole		10 pole	
2 pole									
3 pole									
4 pole									
10 pole									

CA711/2	100
CA711/3	100
CA711/4	50
CA711/10	20

CA711/2	100
CA711/3	100
CA711/4	50
CA711/10	20

Shorting Sleeve & Screw									
External Jumper	<table border="1"> <tr> <td>2 pole</td> <td></td> </tr> <tr> <td>3 pole</td> <td></td> </tr> <tr> <td>4 pole</td> <td></td> </tr> <tr> <td>10 pole</td> <td></td> </tr> </table>	2 pole		3 pole		4 pole		10 pole	
2 pole									
3 pole									
4 pole									
10 pole									

CA711/2	100
CA711/3	100
CA711/4	50
CA711/10	20

CA711/2	100
CA711/3	100
CA711/4	50
CA711/10	20

Marking Tags (MTType)	<table border="1"> <tr> <td>MT8</td> <td>100</td> </tr> <tr> <td>MT2 (MTType on Lever)</td> <td>100</td> </tr> </table>	MT8	100	MT2 (MTType on Lever)	100
MT8	100				
MT2 (MTType on Lever)	100				

MT8	100
MT2	100

MT8	100
MT2	100

COLOR BLOCKS
(other than grey standard)

When ordering please add color suffix to Cat. No.

Example: CTS2.5U-N/R

Color	Ordering Suffix
Red	R
Blue	BU
Black	BL
Orange	O
Green	G
Yellow	Y
White	W
Beige	BG
Dark Brown	DB

* Add required voltage to part number as a suffix. i.e. CSFL4U(L)/24 for 24V AC/DC.