

? Photo ? Dimensions ? Actuator Configurations ? Main Body Configurations ? Circuit Diagram ?  
? Packing Specifications ?

PRINT

Normal type: 300,000 cycles

Part number	<b>SPVQ361700</b>	
Poles	1	
Positions	1	
Changeover timing	Non shorting	
Operation part shape	Push	
Terminal type	With wire (Right side)	
Operating force	1±0.5N	
Main body form	Boss – both sides	
Operating temperature range	-40? to +85?	
Rating (max.)/(min.) (Resistive load)	0.1A 12V DC/50? A 5V DC	
Electrical performance	Contact resistance ?Initial/After operating life?	500m? max./1? max.
	Insulation resistance	100M? min. 500V DC
	Voltage proof	500V AC for 1 minute
Mechanical performance	Wire strength	30N for 1 minute
	Actuator strength	20N
Durability	Operating life without load	300,000 cycles 1? max.
	Operating life with load Rating?max? ?Resistive load?	300,000 cycles 1? max.
Environmental performance	Cold	-40±2? for 500h
	Dry heat	85±2? for 500h
	Damp heat	60±2? , 90 to 95%RH for 500h
Minimum order unit (pcs.)	Japan	400
	Export	1,600

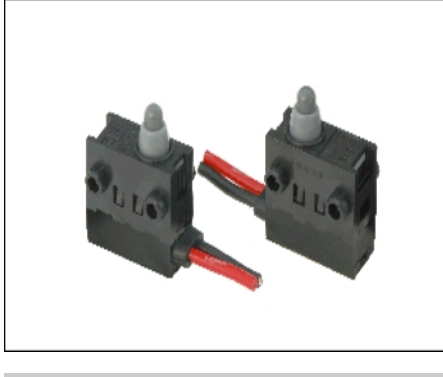
3D CAD (STEP)



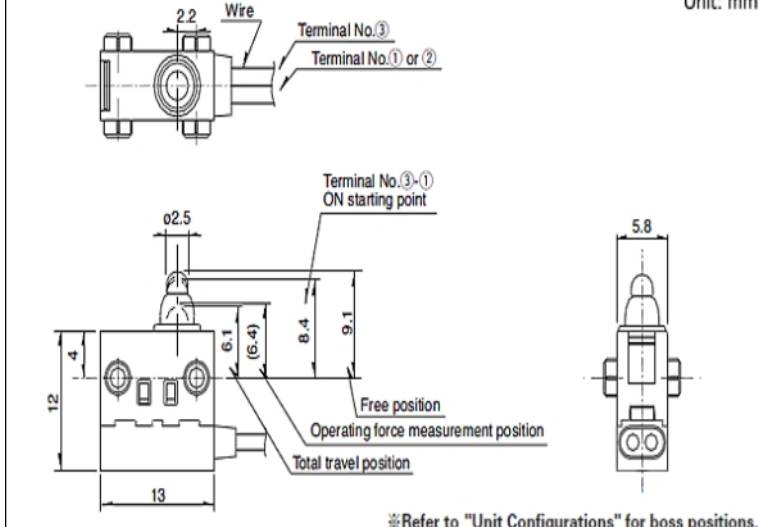
Certificate of Compliance to RoHS regulations



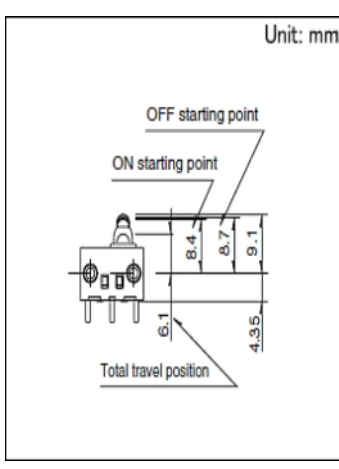
### Photo



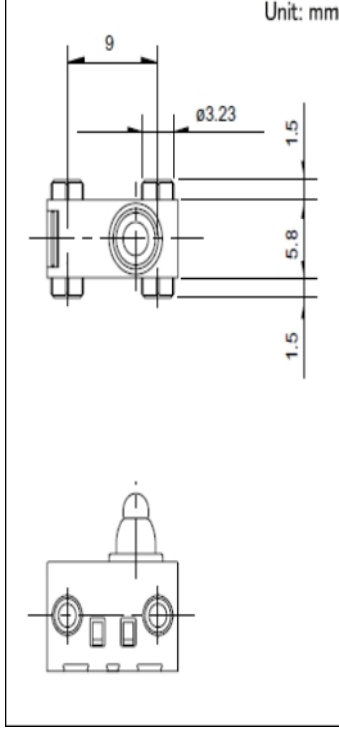
### Dimensions



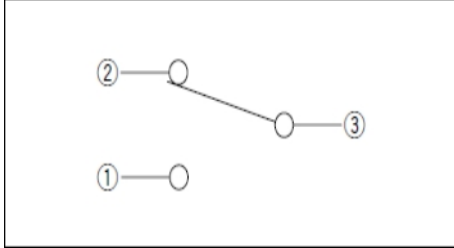
### Actuator Configurations



### Main Body Configurations



### Circuit Diagram



### Packing Specifications

<b>Bulk</b>		
Number of packages (pcs.)	1 case / Japan	400
	1 case / export packing	1,600
Export package measurements (mm)	555 × 375 × 223	

### Notes are common to this series/models.

- This site catalog shows only outline specifications. When using the products, please obtain formal specifications for supply.
- Unless specified, the length of the lead wire is 250mm. Color is either Red, Black or Yellow. For length modification, please contact us.
- This unit cannot be used in water (IP67 rating, except for terminal).
- Unless circuit is specified, wired (downward) types will apply three wires.
- Please specify circuit (N. O. or N. C.) for wired (side) types. Unless specified, the circuit will apply N. O.
- Please place purchase orders by minimum order unit (integer).
- This products can be used in vehicles.  
Although these products are designed to perform over a wide operating temperature range, please ensure that you receive and read the formal delivery specifications before use.

### Inquiries about Products

Inquiry

For more information please contact: Sales or Products Information Center.

1-7, Yukigaya-otsukamachi, Ota-ku, Tokyo, Japan 145-8501  
PHONE : +81 (3) 5499-8154