

AMPHENOL PART NUMBER CONFIGURATION

UX75 - A 20 - X 0 0 X T

SFP RECEPTACLE

U75 = NON-RoHS
UE75 = RoHS COMPLIANT

CONTACT PLATING

(FOR U75 NON-RoHS)

- 1 = PLATING OPTION 1 (SEE MATERIAL NOTES)
 - 4 = PLATING OPTION 4 (SEE MATERIAL NOTES)
- (FOR UE75 RoHS)
- 2 = PLATING OPTION 2 (SEE MATERIAL NOTES)
 - 3 = PLATING OPTION 3 (SEE MATERIAL NOTES)
 - 5 = PLATING OPTION 5 (SEE MATERIAL NOTES)
 - 6 = PLATING OPTION 6 (SEE MATERIAL NOTES)

LUBRICANT OPTION ON MATING AREA

0 = NO
1 = YES

REVISIONS				
SYM	ZONE	ECN, ERN NO.	DATE	APPRD.
K		UPDATED MATERIAL FOR HOUSING	MAY29/07	J.S.
L		UPDATED	APR16/08	A.G.
M		UPDATED	MAR 14/11	J.S.
N		UPDATED	NOV 21/11	J.S.
P		UPDATED	JUL 16/12	J.S.
Q		UPDATED	AUG 17/12	J.S.

THIS IS A CAD DRAWING. DO NOT MANUALLY REVISE.

MATERIAL NOTES:

PLASTIC HOUSING:

HIGH TEMPERATURE LCP
FLAMMABILITY RATING UL94V-0.

CONTACTS:

PHOSPHOR BRONZE

PLATING OPTION 1: (U75 ONLY)

30µ" [0.76 µm] MIN. GOLD ON MATING AREA AND 150-300 µ" (3.81-7.62 µm) MIN. TIN/LEAD (90/10) PLATING ON TERMINATION OVER 50µ" [1.27 µm] MIN. NICKEL UNDER LAYER.

PLATING OPTION 2: (RoHS FOR UE75 ONLY)

30µ" [0.76 µm] MIN. GOLD ON MATING AREA AND 2 µ" (0.05 µm) GOLD FLASH PLATING ON TERMINATION OVER 50µ" [1.27 µm] MIN. NICKEL UNDER LAYER.

PLATING OPTION 3: (RoHS FOR UE75 ONLY)

30µ" [0.76 µm] MIN. GOLD ON MATING AREA AND 150-300 µ" (3.81-7.62 µm) MIN. LOW WHISKER MATTE TIN PLATING ON TERMINATION OVER 50µ" [1.27 µm] MIN. NICKEL UNDER LAYER.

PLATING OPTION 4: (FOR U75 ONLY)

15µ" [0.38 µm] MIN. GOLD ON MATING AREA AND 150-300 µ" (3.81-7.62 µm) MIN. TIN/LEAD (90/10) PLATING ON TERMINATION OVER 50µ" [1.27 µm] MIN. NICKEL UNDER LAYER.

PLATING OPTION 5: (RoHS FOR UE75 ONLY)

15µ" [0.38 µm] MIN. GOLD ON MATING AREA AND 2 µ" (0.05 µm) GOLD FLASH PLATING ON TERMINATION OVER 50µ" [1.27 µm] MIN. NICKEL UNDER LAYER.

PLATING OPTION 6: (RoHS FOR UE75 ONLY)

15µ" [0.38 µm] MIN. GOLD ON MATING AREA AND 150-300 µ" (3.81-7.62 µm) MIN. LOW WHISKER MATTE TIN PLATING ON TERMINATION OVER 50µ" [1.27 µm] MIN. NICKEL UNDER LAYER.

LUBRICANT OPTION: LUBRICANT CAN BE ADDED ON THE CONTACTS MATING AREA (SEE P/N FOR THE OPTION)

PACKAGING:

TAPE AND REEL.

TEMPERATURE RANGE:

-40°C TO +85°C

DRAWN	J.SI	DATE	2005/03/08
DESIGNED	J.SI	DATE	2005/03/08
CHECKED	X		X
I. E. APPRD.			
Q. A. APPRD.			

Amphenol Canada Corp.

TITLE SFP 20 POSITION HIGH SPEED CONNECTOR RECEPTACLE FIXED BOARD, RIGHT ANGLE SMT OPTIONAL PLATING AND LUBRICANT ON MATING

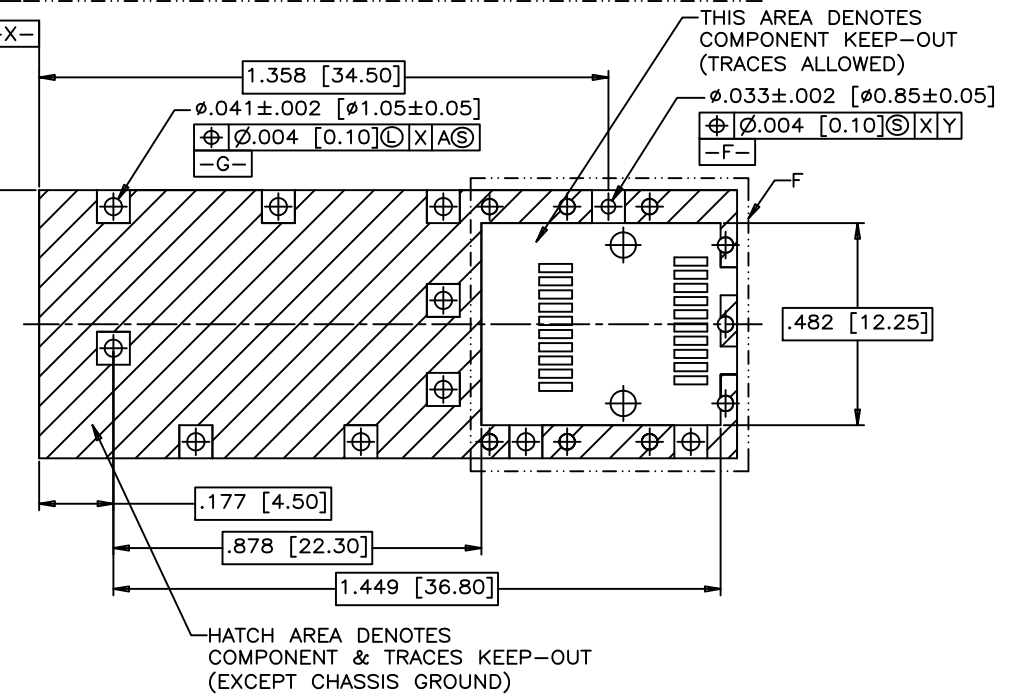
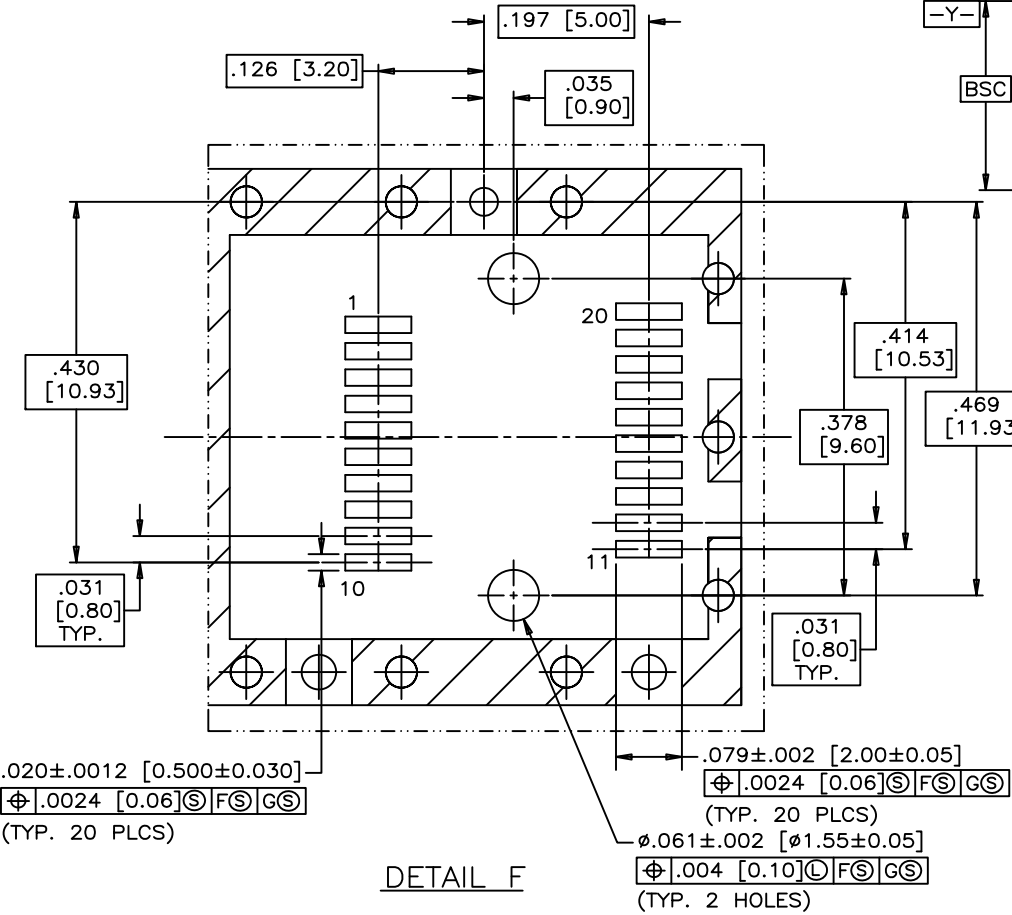
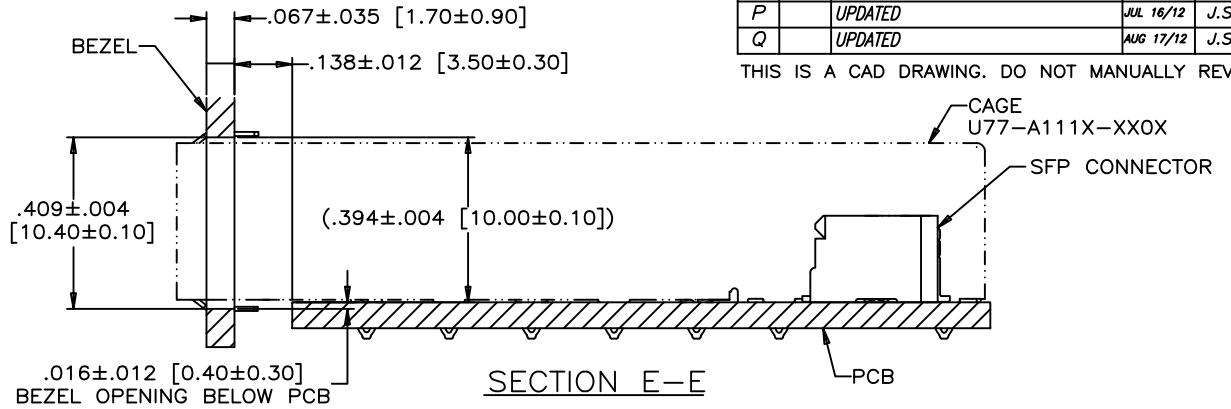
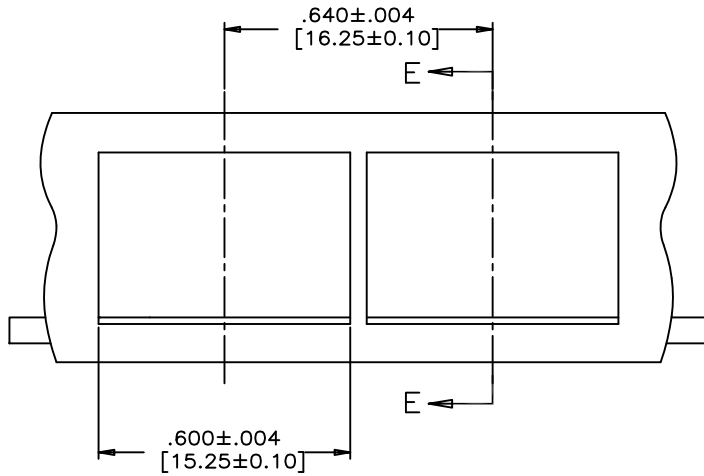
GENERAL TOLERANCES		DWG. APPRD.	
DECIMALS	INCH	MILLIMETERS	ENG. REL. NO.
	X.XX±0.010	X.X±0.25	REF.
	X.XXX±0.006	X.XX±0.15	X
ANGLES	X°±1'	DIMENSIONS ARE IN INCHES [mm]	CODE ID. NO. 03554
	X.X°±0.5'		

DWG	A	DRAWING NO.	P-UX75-A20-X00XX	REV.	Q
SCALE	4/1	WT.	-----	SURF.	-----
			SHEET	1	OF 3

THIS DOCUMENT CONTAINS PROPRIETARY INFORMATION AND SUCH INFORMATION MAY NOT BE DISCLOSED TO OTHERS FOR ANY PURPOSE OR USED FOR MANUFACTURING PURPOSES WITHOUT WRITTEN PERMISSION FROM AMPHENOL CANADA CORP.

REVISIONS				
SYM	ZONE	ECN, ERN NO.	DATE	APPRD.
L		UPDATED	APR16/08	A.G.
M		UPDATED	MAR 14/11	J.S.
N		UPDATED	NOV 21/11	J.S.
P		UPDATED	JUL 16/12	J.S.
Q		UPDATED	AUG 17/12	J.S.

THIS IS A CAD DRAWING. DO NOT MANUALLY REVISE.



DRAWN	J.SI	DATE	2005/03/08
DESIGNED	J.SI	DATE	2005/03/08
CHECKED	X		

Amphenol Canada Corp.

TITLE
SFP 20 POSITION HIGH SPEED CONNECTOR RECEPTACLE FIXED BOARD, RIGHT ANGLE SMT OPTIONAL PLATING AND LUBRICANT ON MATING

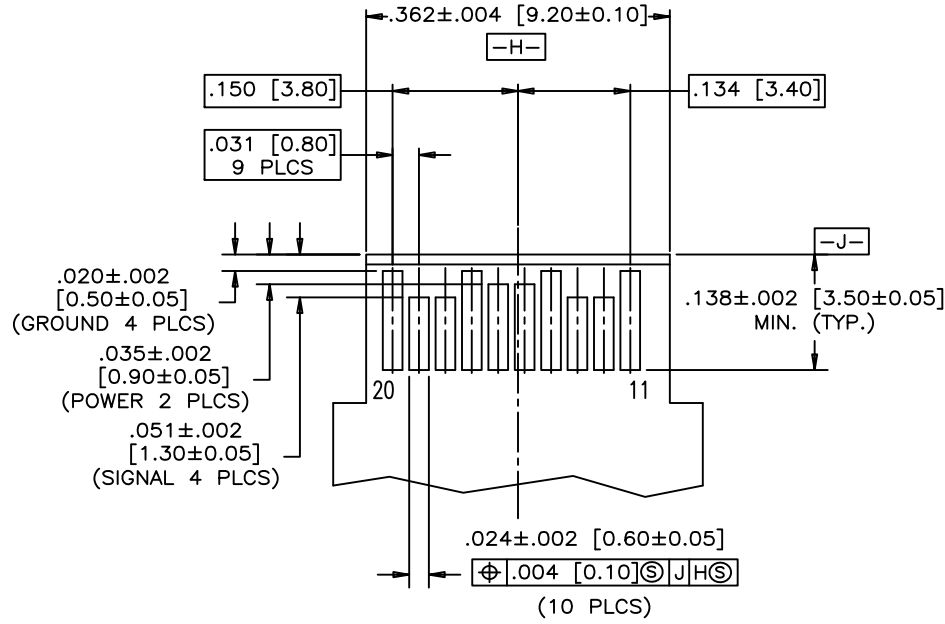
GENERAL TOLERANCES		DWG. APPRD.
DECIMALS	X.XX±0.010 X.XXX±0.006 X.XX±0.15	ENG. REL. NO.
ANGLES	X°±1° X.X°±0.5°	REF. X
	DIMENSIONS ARE IN INCHES [mm]	CODE ID. NO. 03554

DWG	A	DRAWING NO.	P-UX75-A20-X00XX	REV.	Q
SCALE	2/1	WT.	-----	SURF.	-----
					SHEET 2 OF 3

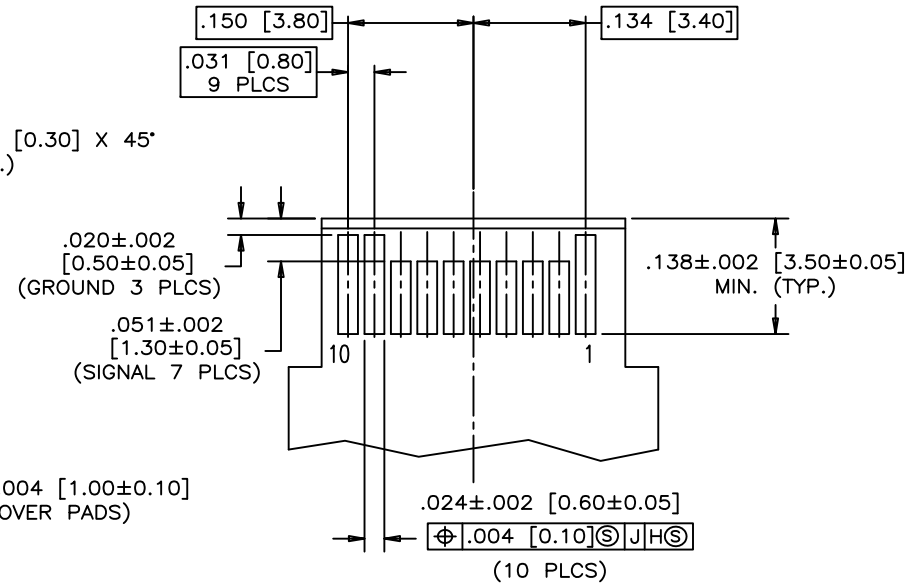
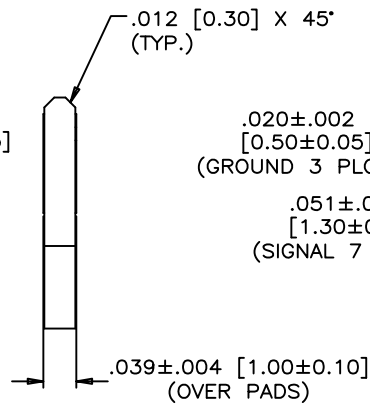
THIS DOCUMENT CONTAINS PROPRIETARY INFORMATION AND SUCH INFORMATION MAY NOT BE DISCLOSED TO OTHERS FOR ANY PURPOSE OR USED FOR MANUFACTURING PURPOSES WITHOUT WRITTEN PERMISSION FROM AMPHENOL CANADA CORP.

SYM ZONE		REVISIONS		
SYM	ZONE	ECN, ERN NO.	DATE	APPRD.
K		UPDATED MATERIAL FOR HOUSING	MAY29/07	J.S.
L		UPDATED	APR16/08	A.G.
M		UPDATED	MAR 14/11	J.S.
N		UPDATED	NOV 21/11	J.S.
P		UPDATED	JUL 16/12	J.S.
Q		UPDATED	AUG 17/12	J.S.

THIS IS A CAD DRAWING. DO NOT MANUALLY REVISE



TOP VIEW OF BOARD



BOTTOM VIEW OF BOARD

RECOMMENDED LAYOUT DETAIL
MATING TRANSCEIVER PCB

THIS DOCUMENT CONTAINS PROPRIETARY INFORMATION AND SUCH INFORMATION MAY NOT BE DISCLOSED TO OTHERS FOR ANY PURPOSE OR USED FOR MANUFACTURING PURPOSES WITHOUT WRITTEN PERMISSION FROM AMPHENOL CANADA CORP.

DRAWN J.SI		DATE 2005/03/08	Amphenol Canada Corp.	
DESIGNED J.SI		2005/03/08		
CHECKED X		X		
GENERAL TOLERANCES			TITLE	
INCH	MILLIMETERS	DWG. APPRD.	SFP 20 POSITION HIGH SPEED CONNECTOR RECEPTACLE FIXED BOARD, RIGHT ANGLE SMT OPTIONAL PLATING AND LUBRICANT ON MATING	
DECIMALS	X.XX±0.010 X.X±0.25	ENG. REL. NO.	DWG A	DRAWING NO. P-UX75-A20-X00XX
ANGLES	X°±1° X°±0.5°	REF. X	SCALE 4:1	WT. ----- SURF. ----- SHEET 3 OF 3
		DIMENSIONS ARE IN INCHES [mm]	CODE ID. NO. 03554	REV. Q