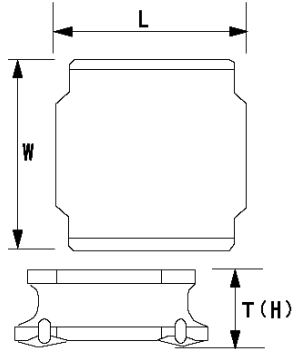


SMD Power Inductors (NR series H type)

NRH2410T100MN



■ Features

- Item Summary
10 μ H($\pm 20\%$), 550mA, 450mA
- Lifecycle Stage
Mass Production
- Standard packaging quantity (minimum)
Taping 2500pcs

■ Products characteristics table

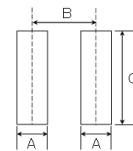
CaseSize (EIA/JIS)	-/2410
Inductance	10 μ H($\pm 20\%$)
Inductance Measuring Frequency	100kHz
Rated Current -Saturation Current	550mA
Rated Current -Temperature Rise Current	450mA
DC Resistance (max)	0.828 Ω
Avg. of DC Resistance	0.69 Ω
Temperature Range	-25 $^{\circ}$ C to 120 $^{\circ}$ C
Self-resonant Frequency (min)	32MHz
RoHS Compliance	Yes
Halogen Free	Yes
Soldering Method	Reflow

■ External Dimensions

L	2.4mm ± 0.1
W	2.4mm ± 0.1
H	1mm max

■ Recommended Land Patterns

【推奨ランドパターン】 実装上の注意 ・実装状態を確認の上ご使用ください。また、お問い合わせいたします。 ・本製品のはんだ付けはリフローはんだ工法に限りま。
【Recommended Land Patterns】 Surface Mounting ・Mounting and soldering conditions should be checked beforehand. ・Applicable soldering process to these products is reflow soldering only.



SMD Power Inductors (NR series/NR series H type/S type /V type)			
Type	A	B	C
NRH2410	0.7	1.45	2
NRH2412			

unit: mm

2013.08.20

The data is reference only. Electrical characteristics vary depending on environment or measurement condition.
TAIYO YUDEN reserves the right to make change to the Date at any time without notice.
Before making final selection, please check product specification.