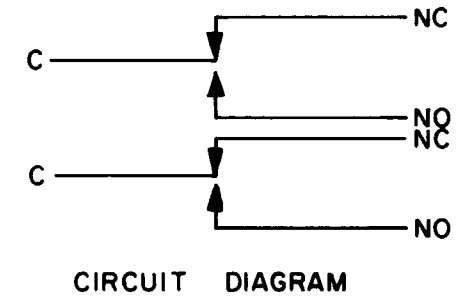


MICRO SWITCH
 FREEPORT, ILLINOIS, U.S.A.
 A DIVISION OF HONEYWELL
 FED. MFG. CODE 91929

SWITCH - ENCLOSED

CATALOG LISTING
602EN142



602EN142

PAGE 1 OF 1

M

DRAWING NUMBER

ISSUE

5

REPLACES

RELEASE NO. PR-14756

CHECK

86

19 MAY

86

ULL

CHECK

86

19 MAY

86

KAG

CHECK

86

9 MAY

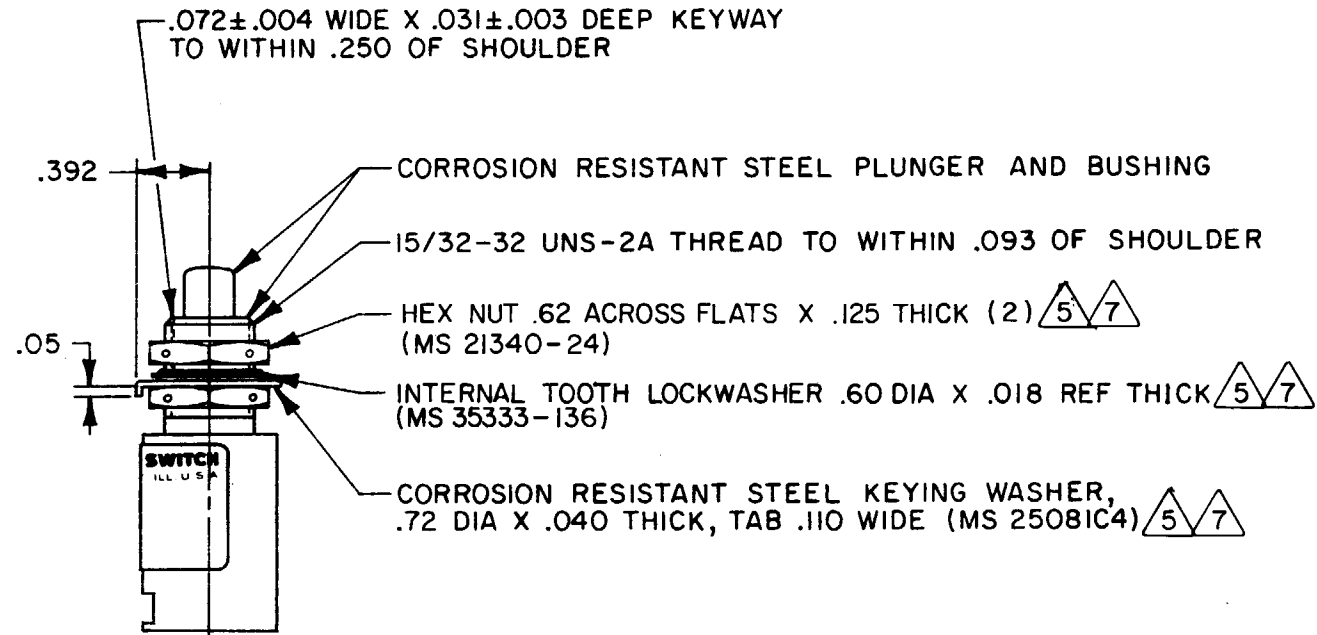
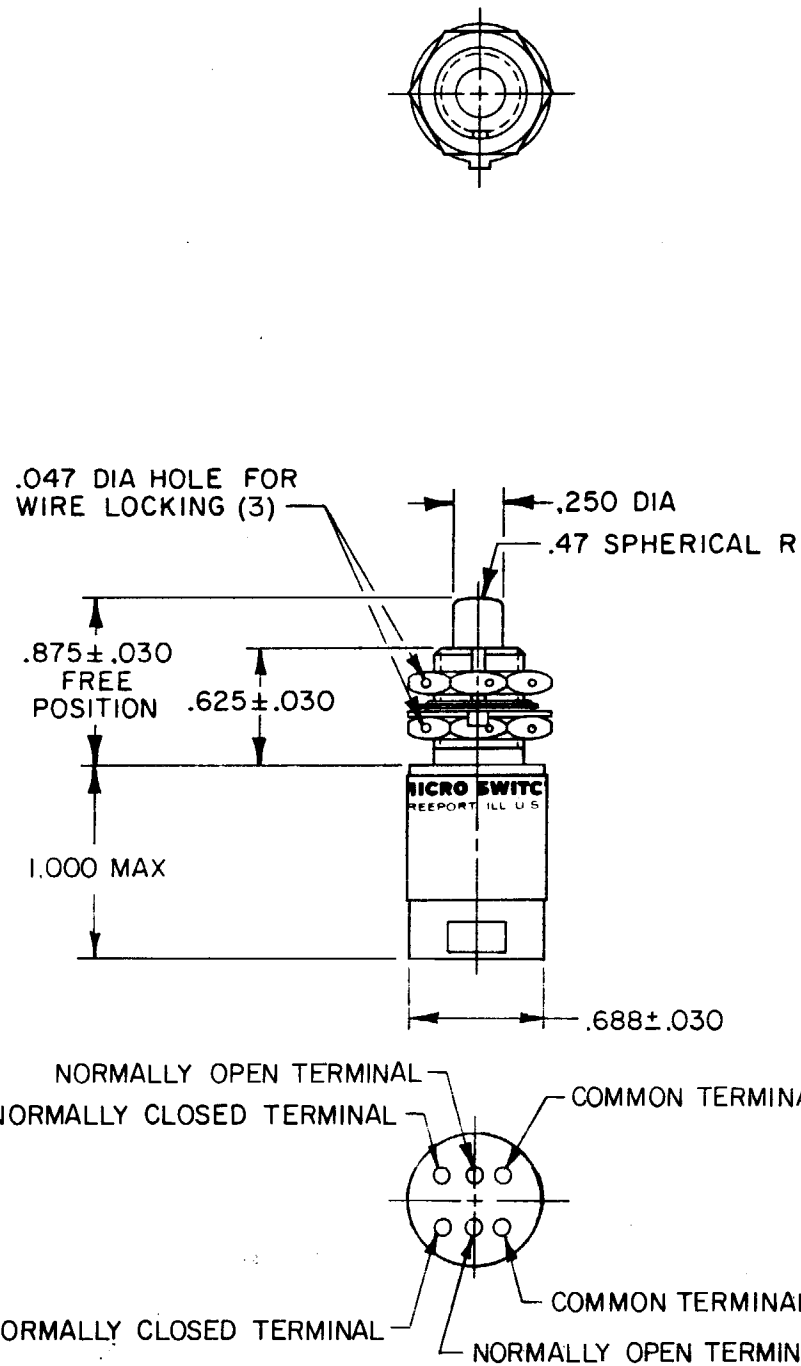
86

FORMTEK

DRAWN

9 MAY

86



NOTES

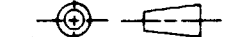
- 1 - CORROSION RESISTANT STEEL ENCLOSURE
- 2 - SWITCH SEALED PER MIL-S-8805 SYMBOL 4
- 3 - COINCIDENCE OF OPERATING AND RELEASING POINTS: .010 INCH OF PLUNGER TRAVEL
- 4 - CATALOG LISTING, AND DATE CODE ARE SHOWN ON NAMEPLATE

5/7

REPLACEMENT MOUNTING HARDWARE - PACKET 19PA9
 APPLICATION INFORMATION ONLY
 HARDWARE MAY BE PACKAGED UNASSEMBLED PER MIL-S-8805

THIS DRAWING COVERS A PROPRIETARY ITEM AND IS THE PROPERTY OF MICRO SWITCH, A DIVISION OF HONEYWELL. THIS DRAWING IS NOT TO BE COPIED OR USED WITHOUT THE APPROVAL OF MICRO SWITCH.

THIRD ANGLE PROJECTION



SCALE FULL

DO NOT SCALE PRINT

TOLERANCES

APPLY TO DESIGN UNITS. CONVERSIONS ARE ONLY FOR REFERENCE. UNLESS NOTED, TOLERANCES ARE:

DIM.	TOL.	DIM.	TOL.
mm	mm/in	in	mm/in
NO PLACES	X	1/100	X X
ONE PLACE	X,X	0.41/0.18	X X X
TWO PLACES	X,XX	0.15/0.008	X X X X
THREE PLACES	X,XXX	0.13/0.005	X X X X X
ANGLES			

DESIGN UNITS SI METRIC US CUSTOMARY

RAW MATERIAL-COMMERCIAL STANDARD MICRO SWITCH STANDARDS APPLY

DIMENSIONS ARE TO BE MET BEFORE PROTECTIVE COATINGS ARE APPLIED

WEIGHT .50 LB

CHARACTERISTICS		ELECTRICAL DATA	
OPERATING FORCE	6-12 LB	CONTACT ARRANGEMENT	
FULL OVERTRAVEL FORCE	30 LB MAX	S P D T (2)	
RELEASE FORCE	4 LB MIN	LOAD	28 VDC
PRETRAVEL	.040 MAX	SEA LEVEL	50,000 FT.
DIFFERENTIAL TRAVEL	.020 MAX	RES	7
OVERTRAVEL	.125 MIN	IND	4
		MOTOR	4

ELECTRICAL DATA	
CONTACT ARRANGEMENT	S P D T (2)
LOAD	28 VDC
SEA LEVEL	50,000 FT.
RES	7
IND	4
MOTOR	4

WEIGHT .50 LB