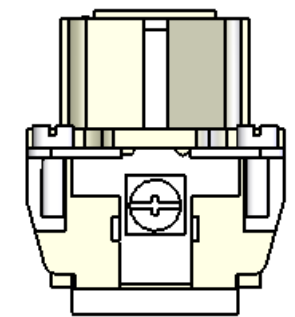
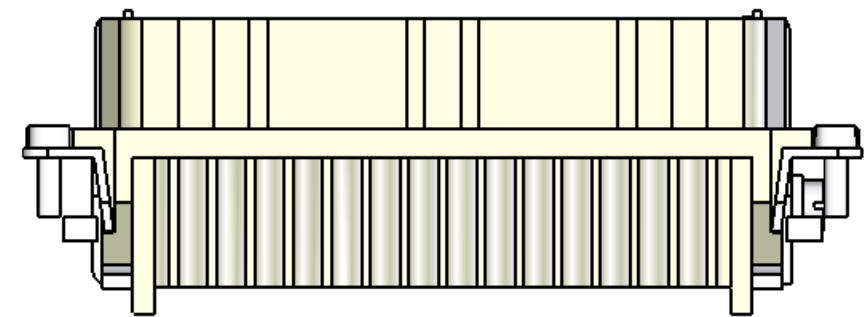
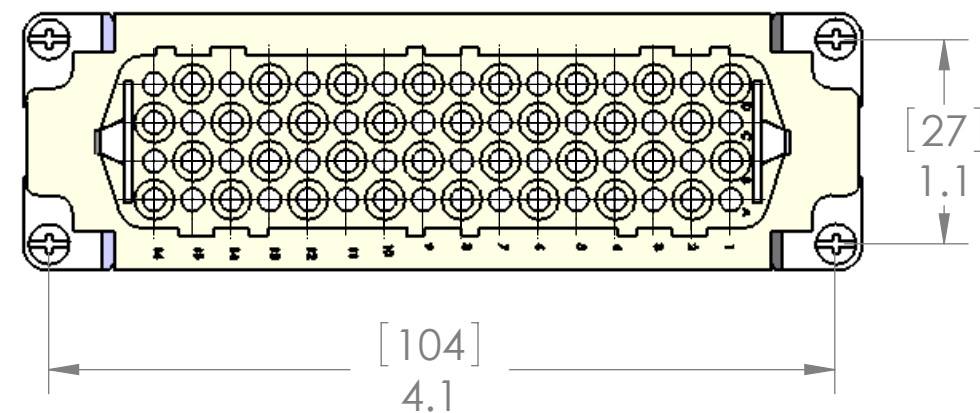


REVISIONS			
REV.	DESCRIPTION	DATE	APPROVED
A	DRAWN IN SW	6/5/2006	JJH



MALE CRIMP CONTACTS	SILVER PLATED	GOLD PLATED
22-26 AWG [0.34 sqmm]	CDFA-0.3	CDFD-0.3
20 AWG [0.5 sqmm]	CDFA-0.5	CDFD-0.5
18 AWG [0.75 - 1.0 sqmm]	CDFA-1.0	CDFD-1.0
16 AWG [1.5 sqmm]	CDFA-1.5	CDFD-1.5
14 AWG [2.5sqmm]	CDFA-2.5	CDFD-2.5

MATERIALS	
HOUSING:	GLASS REINFORCED THERMOPLASTIC
	NICKEL PLATED BRASS HARDWARE
SCREWS:	NICKEL PLATED BRASS
RATINGS:	UL - 600V, 10A. EN 250V/4kV/3, 10A
APPROVALS:	UL & CSA

**PROPRIETARY AND CONFIDENTIAL**  
 THE INFORMATION CONTAINED IN THIS DRAWING IS THE SOLE PROPERTY OF MENCOM CORPORATION. ANY REPRODUCTION IN PART OR AS A WHOLE WITHOUT THE WRITTEN PERMISSION OF MENCOM CORPORATION IS PROHIBITED.

UNLESS OTHERWISE SPECIFIED:		NAME
DIMENSIONS ARE IN INCHES AND [MM]		DRAWN CAM
		CHECKED
		ENG APPR.
		MFG APPR.
		Q.A.
		COMMENTS:
MATERIAL		
FINISH		
DO NOT SCALE DRAWING		

**MENCOM CORPORATION**

TITLE:  
**10A, 600V, 64 PIN CRIMP FEMALE CONNECTOR**

SIZE <b>B</b>	DWG. NO. <b>CDF-64</b>	REV <b>A</b>
SCALE: 1:1	WEIGHT:	SHEET 1 OF 1