

3" Core Circuit Board ID Labels:

B-473 Electrostatic Dissipative Polyester Labels

Color: Clear Finish: Gloss

White polyester with glossy finish used for printed circuit board and electronic component post-process labeling. Features a permanent static dissipative adhesive and a static dissipative release liner. Surface resistivity values in the recommended range for dissipative ESD packing materials. Also meets requirements of EIA-541 "Packaging Material Standards for ESD Sensitive Items."

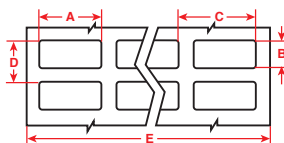


Figure 1

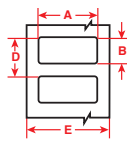


Figure 2

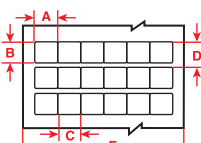


Figure 4

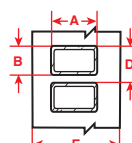


Figure 11

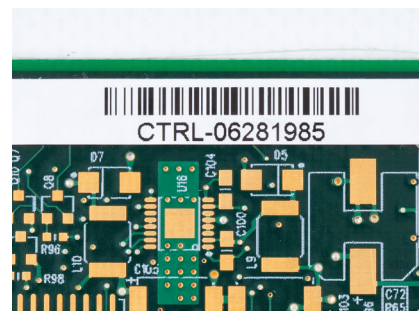


Diagram	Part Number	Material	Color	Label Width A Inch (mm)	Label Height B Inch (mm)	Horiz. Repeat C Inch (mm)	Vert. Repeat D Inch (mm)	Web Width E Inch (mm)	Labels Per Row	Labels Per Pkg	Rec. Ribbon
Fig. 4	THT-11-473-10	Polyester	White	0.250 (6.4)	0.250 (6.4)	0.250 (6.4)	0.375 (9.5)	3.200 (81.3)	12	10,000	R6002
Fig. 1	THT-70-473-20	Polyester	White	0.250 (6.4)	0.250 (6.4)	0.320 (8.1)	0.350 (8.9)	2.370 (60.2)	7	20,000	R6000
Fig. 1	THT-38-473-10	Polyester	White	0.375 (9.5)	0.375 (9.5)	0.437 (11.1)	0.475 (12.1)	3.200 (81.3)	7	10,000	R6002
Fig. 1	THT-12-473-10	Polyester	White	0.500 (12.7)	0.437 (11.1)	0.662 (16.8)	0.537 (13.6)	3.350 (85.1)	5	10,000	R6002
Fig. 1	THT-36-473-10	Polyester	White	0.500 (12.7)	0.200 (5.1)	0.625 (15.9)	0.300 (7.6)	3.200 (81.3)	5	10,000	R6002
Fig. 1	THT-96-473-10	Polyester	White	0.500 (12.7)	0.275 (7.0)	0.600 (15.2)	0.375 (9.5)	2.500 (63.5)	4	10,000	R6002
Fig. 2	THT-97-473-10	Polyester	White	0.500 (12.7)	0.200 (5.1)	-	0.300 (7.6)	0.700 (17.8)	1	10,000	R6011
Fig. 1	THT-14-473-10	Polyester	White	0.650 (16.5)	0.200 (5.1)	0.700 (17.8)	0.300 (7.6)	2.950 (74.9)	4	10,000	R6002
Fig. 2	THT-47-473-10	Polyester	White	0.650 (16.5)	0.200 (5.1)	-	0.300 (7.6)	0.850 (21.6)	1	10,000	R6011
Fig. 1	THT-57-473-10	Polyester	White	0.700 (17.8)	0.375 (9.5)	0.800 (20.3)	0.475 (12.1)	3.350 (85.1)	4	10,000	R6007
Fig. 1	THT-1-473-10	Polyester	White	0.750 (19.1)	0.250 (6.4)	0.800 (20.3)	0.350 (8.9)	3.350 (85.1)	4	10,000	R6007
Fig. 2	THT-46-473-10	Polyester	White	0.750 (19.1)	0.250 (6.4)	-	0.350 (8.9)	0.950 (24.1)	1	10,000	R6006
Fig. 11	THT-2-473-10	Polyester	White	0.900 (22.9)	0.250 (6.4)	1.125 (28.6)	0.350 (8.9)	3.350 (85.1)	3	10,000	R6007
Fig. 2	THT-49-473-10	Polyester	White	0.900 (22.9)	0.250 (6.4)	-	0.350 (8.9)	1.100 (27.9)	1	10,000	R6006
Fig. 2	THT-103-473-10	Polyester	White	1.000 (25.4)	0.250 (6.4)	-	0.350 (8.9)	1.200 (30.5)	1	10,000	R6006
Fig. 1	THT-3-473-10	Polyester	White	1.000 (25.4)	0.375 (9.5)	1.075 (27.3)	0.475 (12.1)	3.350 (85.1)	3	10,000	R6007
Fig. 1	THT-5-473-10	Polyester	White	1.000 (25.4)	0.500 (12.7)	1.075 (27.3)	0.600 (15.2)	3.350 (85.1)	3	10,000	R6007
Fig. 2	THT-58-473-10	Polyester	White	1.000 (25.4)	0.375 (9.5)	-	0.475 (12.1)	1.200 (30.5)	1	10,000	R6006
Fig. 2	THT-59-473-10	Polyester	White	1.000 (25.4)	0.500 (12.7)	-	0.600 (15.2)	1.200 (30.5)	1	10,000	R6006
Fig. 1	THT-13-473-10	Polyester	White	1.250 (31.8)	0.250 (6.4)	1.300 (33.0)	0.375 (9.5)	2.750 (69.9)	2	10,000	R6002
Fig. 2	THT-43-473-10	Polyester	White	1.250 (31.8)	0.250 (6.4)	-	0.350 (8.9)	1.450 (36.8)	1	10,000	R6006
Fig. 1	THT-4-473-10	Polyester	White	1.500 (38.1)	0.250 (6.4)	1.650 (41.9)	0.350 (8.9)	3.350 (85.1)	2	10,000	R6007
Fig. 2	THT-45-473-10	Polyester	White	1.500 (38.1)	0.250 (6.4)	-	0.350 (8.9)	1.700 (43.2)	1	10,000	R6000
Fig. 2	THT-15-473-2.5	Polyester	White	2.000 (50.8)	0.250 (6.4)	-	0.375 (9.5)	2.200 (55.9)	1	2,500	R6000
Fig. 2	THT-48-473-10	Polyester	White	2.000 (50.8)	0.250 (6.4)	-	0.350 (8.9)	2.200 (55.9)	1	10,000	R6000

Did You Know? Custom Label Offerings

Don't see a stock label in the size, configuration or color needed for your particular application?

Brady offers custom label capability for many of the materials in this catalog. Our dedicated, experienced custom quoting team can provide pricing for your unique label needs.

Contact Brady Customer Service at 1-888-272-3946 for more information and to order your custom labels.

