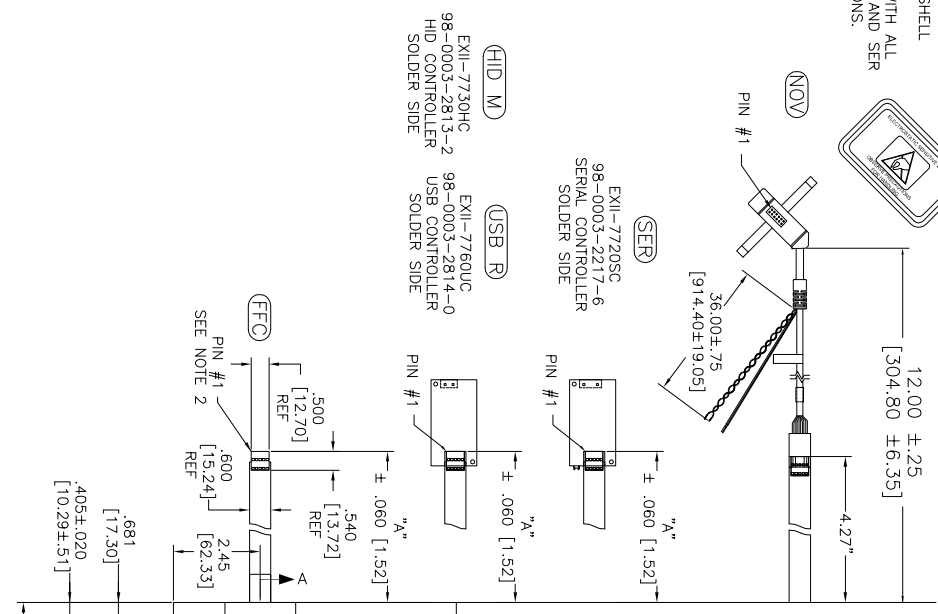
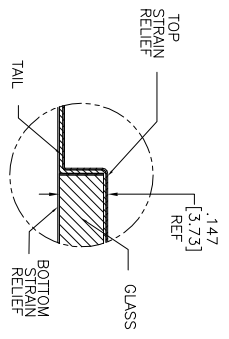
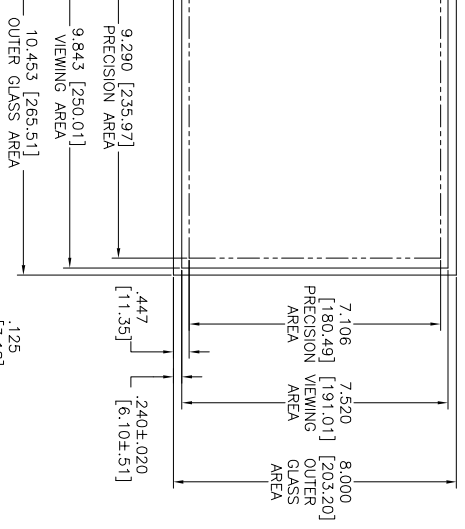


OGA DIAGONAL: 13.16 [334.34]  
 VA DIAGONAL: 12.39 [314.63]  
 PA DIAGONAL: 11.70 [297.08]

ESD CLAMSHELL CASE IS USED WITH ALL NOV, USB AND SER TERMINATIONS.



TOP LEVEL NUMBER	US NUMBER	CHINA NUMBER	TYPE	DM # (TOTAL GLASS TO CONNECTOR)	A/G FINISH	PROD SPEC
17-8581-203	98-0003-2633-4	59-0000-0156-6	FFC	4.27" [108.46]	AG500	23655
17-8581-205	98-0003-2634-2	N/A	FFC	8.00" [203.20]	AG500	23655
17-8581-206	98-0003-2635-9	N/A	NOV	SEE DWG	AG500	23655
17-8581-221	98-0003-2637-5	59-0000-0158-2	SER	4.27" [108.46]	AG500	23655
17-8581-227	98-0003-2639-1	N/A	SER	8.00" [203.20]	AG500	23655
17-8581-218	98-0003-3272-0	59-0000-0157-4	USB R	4.27" [108.46]	AG500	23655
17-8581-230	98-0003-2994-0	59-0000-0159-0	HID M	8.00" [203.20]	AG500	23655



NOTES:  
 1. WEIGHT OF GLASS IN GRAMS: 411±10%  
 2. 5 PIN AMP CONNECTOR LATCH STYLE HOUSING P/N: 487526-4  
 TIN CONTACTS P/N: 2-487406-4  
 HOUSING ORIENTED WITH LATCH DOWN

.147±.020 [3.73±.51]  
 TOTAL THICKNESS OF GLASS, CABLE AND STRAIN RELIEF

PINOUT
1 LR
2 LL
3 SHLD
4 UL
5 UR

UNITS	INCHES [MM]
DATE	DATE
DESIGNED BY	DESIGNED BY
DRAWN BY	DRAWN BY
CHECKED BY	CHECKED BY
APPROVED BY	APPROVED BY

REV	DATE	DESCRIPTION
01	03/01/78	INITIAL RELEASE
02	03/01/78	REVISION
03	03/01/78	REVISION
04	03/01/78	REVISION
05	03/01/78	REVISION
06	03/01/78	REVISION
07	03/01/78	REVISION
08	03/01/78	REVISION
09	03/01/78	REVISION
10	03/01/78	REVISION

MARKETING DRAWING  
 SCT32NN 12.39"

REV	DATE	DESCRIPTION
01	03/01/78	INITIAL RELEASE
02	03/01/78	REVISION
03	03/01/78	REVISION
04	03/01/78	REVISION
05	03/01/78	REVISION
06	03/01/78	REVISION
07	03/01/78	REVISION
08	03/01/78	REVISION
09	03/01/78	REVISION
10	03/01/78	REVISION

1 2 3 4