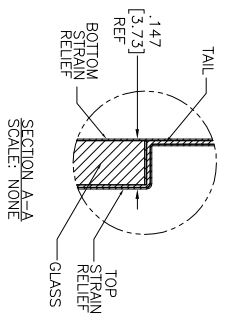
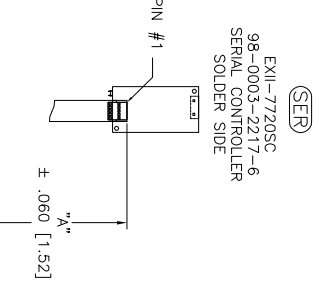
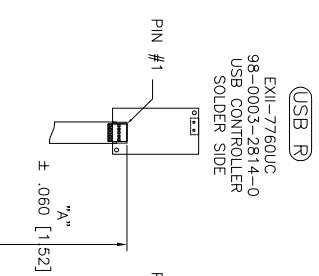
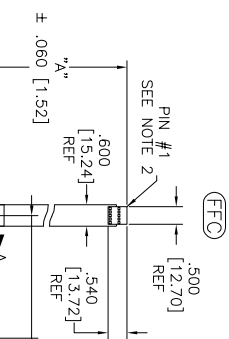
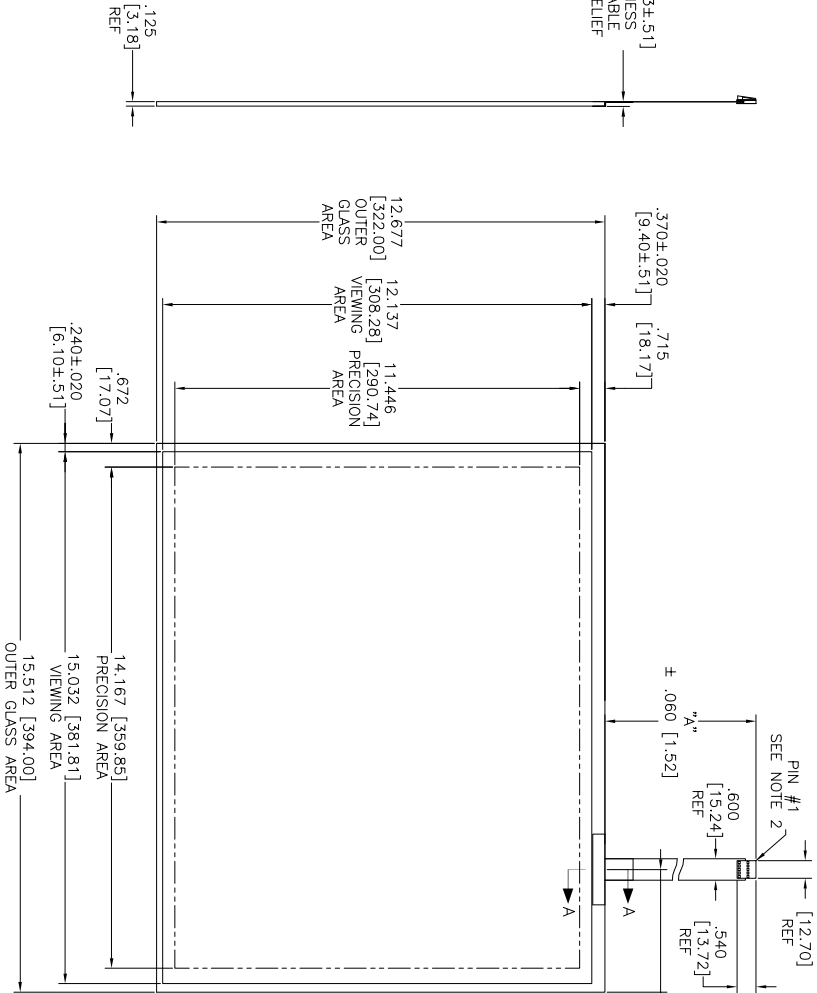


OGA DIAGONAL: 20.03 [508.84]
 VA DIAGONAL: 19.32 [490.73]
 PA DIAGONAL: 18.21 [462.63]

TOP LEVEL NUMBER	US NUMBER	TYPE	DM "X" (TOTAL GLASS TO CONNECTOR)	A/G FINISH	PROD SPEC
17-9681-205	98-0003-3329-8	FFC	8.00" [203.20]	AG500	23655
17-9681-226	98-0003-3330-6	USB R	8.00" [203.20]	AG500	23655
17-9681-227	98-0003-3331-4	SFR	8.00" [203.20]	AG500	23655



.147±.020 [3.73±.51]
 TOTAL THICKNESS
 OF GLASS, CABLE
 AND STRAIN RELIEF



NOTES:

1. WEIGHT OF GLASS IN GRAMS: 1006±10%
2. NICOMATIC HOUSING P/N: OLO5
3. NICOMATIC RECEPTACLES (PINS) MATTE TIN PLATED P/N: 14106-12
4. HOUSING ORIENTED WITH LATCH DOWN

PINOUT
1 LL
2 UL
3 SHLD
4 UR
5 LR

UNITS INCHES [MM]

TOLERANCES UNLESS OTHERWISE SPECIFIED

X ±.03 [.76]
 .XX ±.015 [.38]
 .XXX ±.015 [.38]
 ANGLES ±1°

THIRD ANGLE PROJECTION

DO NOT SCALE DRAWING

SCALE 1 = 1

3M TOUCH SYSTEMS
 ST. LOUIS, MO, USA

THIS DOCUMENT IS THE PROPERTY OF 3M TOUCH SYSTEMS. IT IS TO BE USED WITHOUT ANY WRITTEN PERMISSION OR USED OR REPRODUCED FOR OTHER THAN 3M AUTHORIZED PERSONNEL.

REV	DATE	BY	CHK	APP
01	3/09	MTD		
02	7/09	SB		
03	2/12	SB		

MARKETING DRAWING
 SCT32NN 19.32"

DATE: 3/09

SCALE: 1 = 1

DOC NO: 36671-MKT

SHEET: 1 OF 1

REV: C